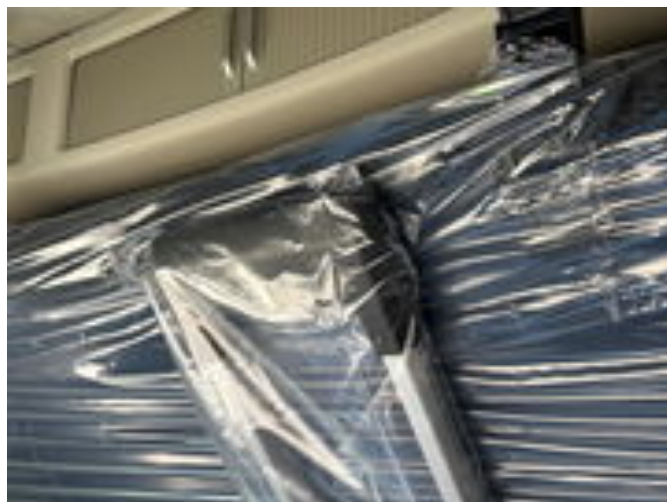


Volvo FH 500 4x2 XL CABINE i-Parc PTO ALCOA RETARDER NEW

General features

Brand	Volvo
Model	FH 500
Subcategory	Cab over engine
Odometer reading	750km
Construction year	2025
Date of first registration	04-02-2025
Color	White
Condition	Used
General condition	Very good
Fuel	Diesel
Emission class	Euro 6



Characteristics

Empty weight	8.300kg
Cabin	Sleeper cabin

Volvo FH 500 4x2 XL CABINE i-Parc PTO ALCOA RETARDER NEW

Technical specifications

Number of axes	2
Axis configuration	4x2
Transmission	Automatic
Engine output	500hp

Accessories

- Reversing camera
- Air conditioning
- Aluminium fuel tank
- Cruise control
- Roof spoiler
- Twin fuel tank
- Electrically operated windows
- Refrigerator
- Alloy wheels
- PTO
- Radio/CD player
- Side skirts
- Sleeper cab
- Vehicle heater
- Heavy duty engine brake
- Visor